



VersaGraphix Controller 20kHz Ultrasonic Generator

The VersaGraphiX Controller makes setup and operation of your ultrasonic process a simple task. The graphical interface was designed with the operator in mind. Go/no go results are displayed to simplify the process.

For engineers or maintenance personnel who require more, a simple touch of the screen will bring them to setup screen; this screen shows the actual weld results, along with the weld parameters.

If you require more, another touch can bring you to the SPC screen.

Languages are not a problem – the program currently supports fourteen languages.

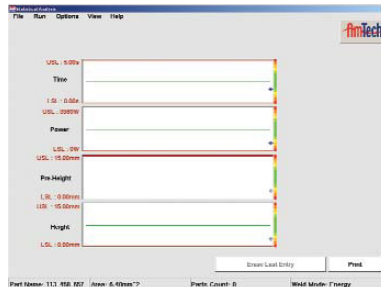
Utilizing Embedded XP as our operating system allows the software to be run offline at your desk. Splices or assembly drawings can be built or downloaded by either a USB stick or through the Ethernet.

Metal Welding



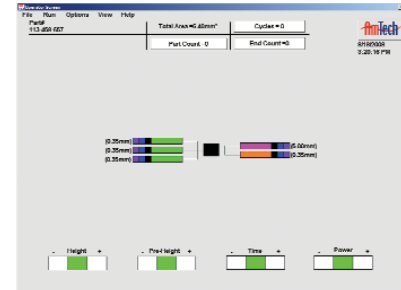
Control Features:

- 1000 presets for sequential welding capability.
- 1000 part preset library.
- Four USB ports for file transfer.
- Ethernet ready.
- RS232 connection to interface with Raychem shrink tube machine.
- Printer Interface.
- Automatic weld parameter calculations based on the cross-sectional area of the splice (wire splicing).
- Weld Quality: Weld amplitude is automatically maintained with line voltage variations of $\pm 10\%$ through Branson's proprietary closed loop control.
- Weld Modes: 4 different weld modes to suit your particular application.
 - Energy
 - Time
 - Height (compaction)
 - Energy with Height Compensation
 - Amplitude Stepping



Quality Controls:

- Text and Audible alarm messages.
- Two Level Password Protection.
- Lock on Alarm: Ensures suspect part is clamped until a password is entered.
- Q System Protection Monitor (SPM). Three levels of power protection are provided:
 - 1) phasing
 - 2) over voltage
 - 3) over current
- Circuitry system helps avoid equipment failures and provides greater weld accuracy and repeatability.
- Daily weld history file stored on hard drive.
- Error log.
- Maintenance log.
- Statistical screen tracks and displays the last 128 welds.



Operator Interface:

- 15" color touch LCD monitor.
- 14 selectable languages.
- Bar code scanner capable: presets and sequences can be recalled through the use of the bar code scanner.
- Preset: All weld parameters are saved so manual adjustment of controls is not required.
- Three Teach Mode options. The teach mode automatically calculates your weld quality windows for:
 - Time
 - Power
 - Pre Height
 - Height

BRANSON

Branson Ultrasonics Corporation
41 Eagle Road, Danbury, CT 06813-1961
(203) 796-0400 • Fax: (203) 796-9838
www.bransonultrasonics.com
e-mail: info@bransonultrasonics.com

VersaGraphix Controller © Branson Ultrasonics Corporation 2011
The Emerson logo is a trademark and service mark of Emerson Electric Co.
Revised and printed in the U.S.A. 9/2011