

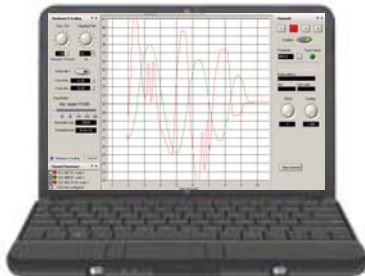
## Undrive SP Digital AC Drives

**Our Undrive SP  
AC Drive Family  
(1/2 -1000HP)**



Come learn how to setup, optimize and in general get the most out of your Undrive SP Digital AC Drives. Working on high-powered drives like these for the first time can be intimidating. To get you over that fear, our students work at their desk with small Vector or Servo motors before working with the larger motors at the Load Benches. On our trainers, motor setup and tuning procedures can be practiced and results observed using our CTScope software. Each student will log several hours on a laptop PC to gain proficiency using our CTSoft configuration and software diagnostic tools.

### Diagnostic Tools...

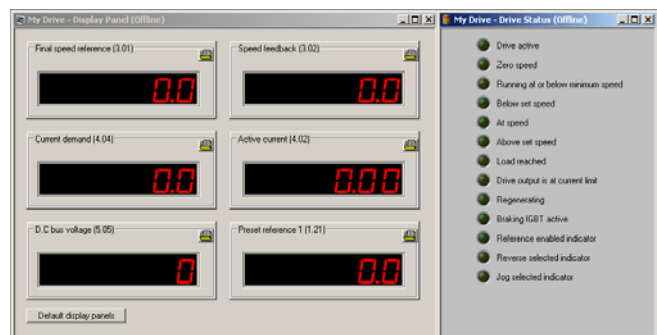


Do you have a 4 Channel Soft-Scope that can record and print in color back in your shop....?

Didn't think so- most people don't.  
But you will take CTScope home with you...  
and with the training on how to use it.



Learn how to create diagnostic screens to make your job easier and setup faster



As part of the class, and included on the CDROM, you will learn how to capture drive performance waveforms and print them for analysis. Being able to see what is happening is a crucial step in diagnosing any drive problem. Our software scope runs on a PC and can display up to 4 different signals simultaneously. These waveforms can be captured and placed into any Windows™ program so that they can be faxed or emailed to our Tech Support Center (if need be) for expert advice.

Our Unidrive SP series, besides being able to run the common AC Induction motor, can also run Vector and Servo motors for applications requiring higher dynamic response for speed or position applications. The student will examine, learn to tune and run motors in all 3 modes.

Our Unidrive SP series have a wealth of programmable features that most customers know little about.

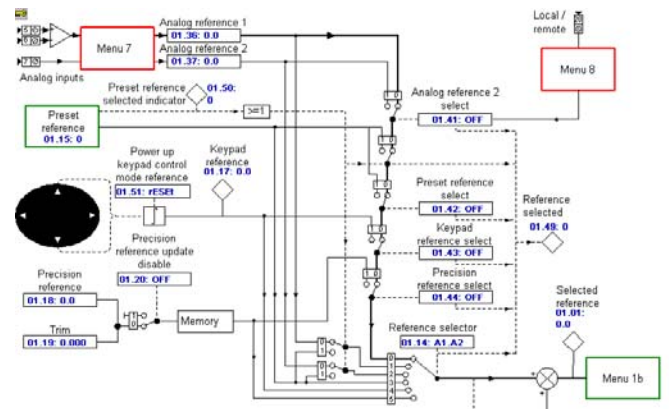
In our training class you will learn not only how to set-up, tune and diagnose our drives, but also learn to use many of the built-in programmable features such as Logic Gates, Time Delays, Variable Selectors, the MOP, Comparators PID Controller, etc that will allow you to get the most out of the drives for your company's manufacturing needs.



**You don't have much experience with computers ?**

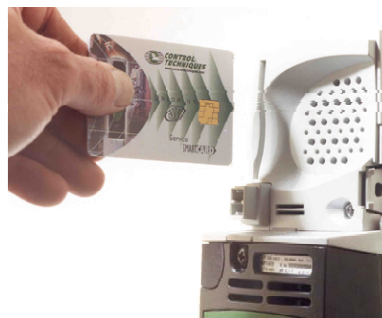
**Don't worry- many of our students don't either**

We teach you what you need to know to be able to use our Drive Software effectively. If you have had little time behind a PC, you'll be amazed at what you will be able to do after this course. The use of the PC is a very important tool in today's Drive world and for that reason is a very integral part of this course. You will learn how to use CTSoft to view the inside setup and dynamic signal flow in an easy-to-interpret graphical format. You will learn how to customize your drive set-ups and most importantly how to save and retrieve specific drive set-ups should drive duplication be necessary.



Learn about alternate methods of accessing "advanced parameters" quickly without needing a laptop –even from a remote location using our "plain text" Remote Keypad unit

**You don't carry a laptop to the jobsite ?**



SmartCard data storage & recovery operations are covered. This is how we "clone" SP Drives so that complex setups can be readily duplicated without needing a laptop

Learn about Unidrive SP Option modules that extend the drives functionality- such as the I/O Expanders, Encoder Reference and Feedback and CoProcessors options



**Learn about SP Options ?**

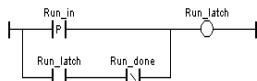
## #TRNG-120 UnidriveSP/SyPT Lite \$600 / 3 Days

This class on the UnidriveSP AC Drive and Servo Control reviews all of the capabilities this solution platform has to offer, as well as the basics of operating, start-up and diagnostics. Upon completion of the class, you will be able to recognize unique applications for the UnidriveSP, perform basic drive configuration, complete start-up, and understand troubleshooting / diagnostics on the drive. Hands-on labs cover keypad and SmartCard operation, parameter configuration and tuning for open loop, closed loop and servo modes. You will gain an understanding of the drive's menu structure as well as become familiar with the CTSOft drive configuration tool. Extensive labs for advanced SP parameters and SyPT Lite programming software are included in this course.

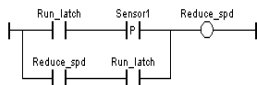
Exercises using advanced parameters and SyPT Lite programming software are included in this course.

Unidrive SP drives can execute PLC Ladder programs to achieve those miscellaneous functions outside what the base drive can do. SyPT Lite, our PLC configuration software, allows you to create a custom application and be executed by the drive to achieve the functions you require—all residing inside for compact, cost effective system solutions.

(\* Detect a positive edge transition for the run command \*)



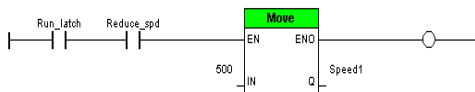
(\* Detect Sensor 1 and latch the reduce speed output \*)



(\* Run at high speed \*)



(\* Set the low speed for the conveyor \*)



Come to the course and you will take home a CDROM packed with Application Examples, Basic, Advanced and Option module manuals, Troubleshooting Guides, 4 Channel Color Software Scope, SyPT Lite PLC software, Drive Configuration Software Setup and Diagnostic Tools and much, much more.



<b>Upcoming Course Dates-2010</b>		<b>\$600/ Student</b>
<b>Jan 19-21 FM</b>		<b>Mar 23-25 EP</b>
<b>Jun 1-3 GI</b>		<b>Aug 17-19 EP</b>
<b>FM- Ft Myers FL</b>	<b>EP-Eden Prairie MN</b>	<b>GI - Grand Island NY</b>

For further information, questions or to discuss having one of our standard courses conducted at your facility, please contact our Grand Island Training Center by email at [training.cta@emerson.com](mailto:training.cta@emerson.com) or by phone at 1-800-367-8067.

# Registration Information

Our Training/Service Center, located on Grand Island, is just 10 minutes from this very popular tourist and historic site. Enjoy the extra value of the US Dollar while in Canada by just crossing the bridge at the Falls. Many of our students bring their family with them to combine business with pleasure.

Contact our registration desk for any special accommodation needs, directions, maps and ideas for things to do and see while here.



**Student Name:** \_\_\_\_\_

**Company Name:** \_\_\_\_\_

**Address:** \_\_\_\_\_

**City/State/ZIP:** \_\_\_\_\_

**Phone:** \_\_\_\_\_

**Fax:** \_\_\_\_\_

**Email:** \_\_\_\_\_

**Payment:** \_\_\_\_\_

**Please Register me for the following Class:**

**Course:** \_\_\_\_\_

**Dates:** \_\_\_\_\_

**Please make hotel reservations on my behalf**

**Arrival Date:** \_\_\_\_\_

**Hotel:** Grand Island / Niagara Falls

## Class Times

Classes begin each day at 8:30am and end at approximately 4:30pm unless otherwise noted.

## Transportation

Transportation from the Buffalo/Niagara International Airport is not provided. Taxi service is very limited on Grand Island; a rental car is recommended.

## Hotel Accommodations

Hotel arrangements can be made on your behalf at a preferred rate at the Holiday Inn in Niagara Falls or here on Grand Island. Both are convenient to the Training Center, although the Niagara Falls location has a little more to offer during free evening hours.

### Holiday Inn – Grand Island (716)-773-1111

Resort hotel located about 7 miles from the Training Center. Offers indoor pool, golf, restaurant, lounge, and work-out rooms. 10 or 15 minute ride to Buffalo or Niagara Falls. [www.holiday-inn.com/grandislandny](http://www.holiday-inn.com/grandislandny)

### Holiday Inn – Niagara Falls

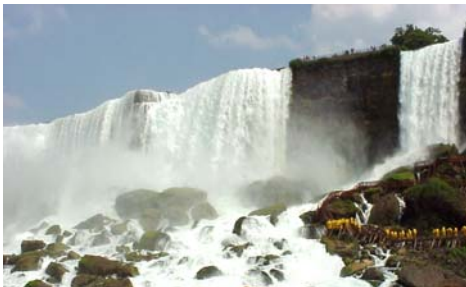
Downtown hotel located 10-15 minutes from the Training Center. Offers swimming, restaurant, lounge, exercise room, walking distance to The Falls and Canada, as well as many other tourist attractions.

[www.crowneplaza.com/niagarafalls](http://www.crowneplaza.com/niagarafalls)

---

Phone 1-800-367-8067 - Fax 716-774-8327 – Email: [training.cta@emerson.com](mailto:training.cta@emerson.com)

---



See one of the Seven  
Wonders  
of the World

Bring Your Camera!



[www.niagara-usa.com](http://www.niagara-usa.com)