

## Mentor/Quantum MP Digital DC Drives

Come learn how to setup, optimize and in general get the most out of your Mentor MP or Quantum MP Digital DC Drives. Working on high-powered drives like these for the first time can be intimidating. To get you over that fear, our students work at their desk with a small DC motor before working with the larger motors at the Load Benches. On our trainers, motor setup and tuning procedures can be practiced and results observed using our CTScope software. Each student will log several hours on a laptop PC to gain proficiency using our CTSoft configuration and software diagnostic tools.



### Diagnostic Tools...

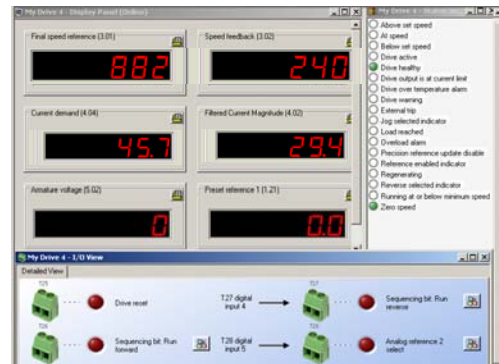


Do you have a 4 Channel Soft-Scope that can record and print in color back in your shop...?

Didn't think so- most people don't.  
But you will take CTScope home with you...  
and with the training on how to use it.



Learn how to create diagnostic screens to make your job easier and setup faster



As part of the class, and included on the CDROM, you will learn how to capture drive performance waveforms and print them for analysis. Being able to see what is happening is a crucial step in diagnosing any drive problem. Our software scope runs on a PC and can display up to 4 different signals simultaneously. These waveforms can be captured and placed into any Windows™ program so that they can be faxed or emailed to our Tech Support Center (if need be) for expert advice.

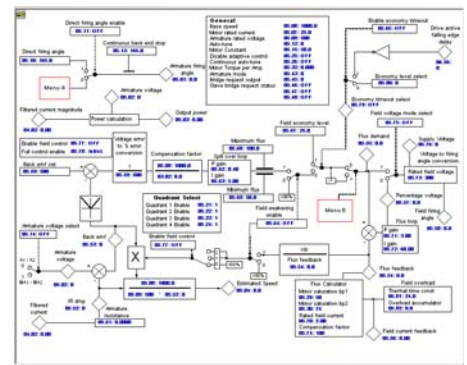
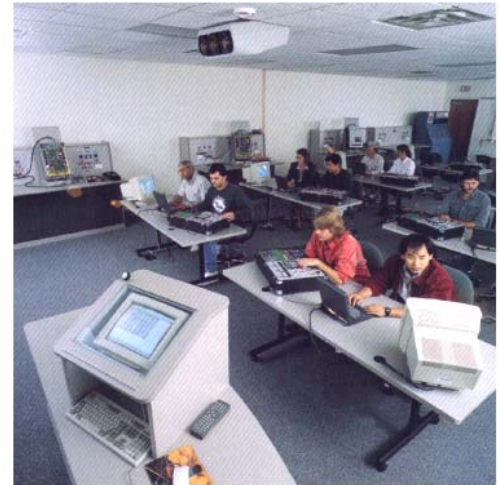
Our Mentor/Quantum MP drives have a wealth of built-in programmable features that most customers know little about.

In our training class you will learn not only how to set-up, tune and diagnose our drives, but also learn to use many of the built-in programmable features such as Logic Gates, Time Delays, Variable Selectors, the MOP, Comparators PID Controller, etc that will allow you to get the most out of the drives for your company's manufacturing needs.

**You don't have much experience with computers ?**

**Don't worry- many of our students don't either**

We teach you what you need to know to be able to use our Drive Software effectively. If you have had little time behind a PC, you'll be amazed at what you will be able to do after this course. The use of the PC is a very important tool in today's Drive world and for that reason is a very integral part of this course. You will learn how to use CTSoft to view the inside setup and dynamic signal flow in an easy-to-interpret graphical format. You will learn how to customize your drive set-ups and most importantly how to save and retrieve specific drive set-ups should drive duplication or replication be necessary.



**You don't carry a laptop to the jobsite ?**



Learn about alternate methods of accessing "advanced parameters" quickly without needing a laptop – even from a remote location using our "plain text" Remote Keypad unit



SmartCard data storage & recovery operations are covered. This is how you can "clone" MP Drives so that complex setups can be readily duplicated without needing a laptop



Learn about Unidrive MP Option modules that extend the drives functionality- such as the I/O Expanders, Encoder Reference and Feedback and CoProcessors options

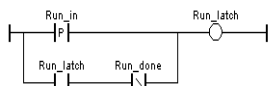


**Learn about MP Options**

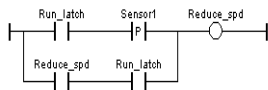
## #TRNG-127 Mentor/Quantum MP \$600 / 3 Days

This class features the Mentor and Quantum MP family with concentration on the basics of operating, start-up, troubleshooting, and diagnostics. You will gain an understanding of the drive's menu structure as well as becoming familiar with the CTSofT drive configuration tool. Upon completion of the class, you will be able to recognize applications, perform basic drive configuration, complete start-up, and understand troubleshooting / diagnostics on the drive. Hands-on exercises are used throughout the course to review configuration, troubleshooting, repair, and maintenance. Additional labs cover keypad variants, parameter backup and restoration techniques using both CTSofT and the SmartCard plus tuning procedures for both Tach and Encoder feedback types as well as the internal autotuning facilities.

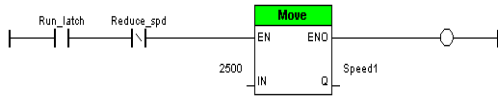
(\* Detect a positive edge transition for the run command \*)



(\* Detect Sensor 1 and latch the reduce speed output \*)



(\* Run at high speed \*)



(\* Set the low speed for the conveyor \*)



Mentor/Quantum MP drives can execute PLC Ladder programs of your creation to achieve those miscellaneous functions outside what the base drive can do. SyPT Lite, our PLC configuration software, allows you to create a custom application, place it into the drive for internal execution (or by the Apps Lite module) to achieve the functions you require—all residing inside the drive itself for compact system solutions.

Exercises using advanced parameters and SyPT Lite programming software are included in this course.

Come to the course and you will take home a CDROM packed with Application Examples, Basic, Advanced and Option module manuals, Troubleshooting Guides, 4 Channel Color Software Scope, SyPT Lite PLC software, Drive Configuration Software Setup and Diagnostic Tools and much, much more.



**Upcoming Course Dates-2011**

**\$600/ Student**

**July 12 - 14 GI**

**Oct 4 - 6 GI**

**GI - Grand Island New York**

For further information, questions or to discuss having one of our standard courses conducted at your facility, please contact our Grand Island Training Center by email at [training.cta@emerson.com](mailto:training.cta@emerson.com) or by phone at 1-800-367-8067 x158.

## Registration Information

Our Training/Service Center, located on Grand Island, is just 10 minutes from this very popular tourist and historic site. Enjoy the extra value of the US Dollar while in Canada by just crossing the bridge at the Falls. Many of our students bring their family with them to combine business with pleasure.

Contact our registration desk for any special accommodation needs, directions, maps and ideas for things to do and see while here.



**Student Name:** \_\_\_\_\_

**Company Name:** \_\_\_\_\_

**Address:** \_\_\_\_\_

**City/State/ZIP:** \_\_\_\_\_

**Phone:** \_\_\_\_\_

**Fax:** \_\_\_\_\_

**Email:** \_\_\_\_\_

**Payment:** \_\_\_\_\_

**Please Register me for the following Class:**

**Course:** \_\_\_\_\_

**Dates:** \_\_\_\_\_

**Please make hotel reservations on my behalf**

**Arrival Date:** \_\_\_\_\_

**Hotel:** Grand Island / Niagara Falls

### Class Times

Classes begin each day at 8:30am and end at approximately 4:30pm unless otherwise noted.

### Transportation

Transportation from the Buffalo/Niagara International Airport is not provided. Taxi service is very limited on Grand Island; a rental car is recommended.

### Hotel Accommodations

Hotel arrangements can be made on your behalf at a preferred rate at the Holiday Inn in Niagara Falls or here on Grand Island. Both are convenient to the Training Center, although the Niagara Falls location has a little more to offer during free evening hours.

### Holiday Inn – Grand Island (716)-773-1111

Resort hotel located about 7 miles from the Training Center. Offers indoor pool, golf, restaurant, lounge, and work-out rooms. 10 or 15 minute ride to Buffalo or Niagara Falls. [www.holiday-inn.com/grandislandny](http://www.holiday-inn.com/grandislandny)

### Holiday Inn – Niagara Falls

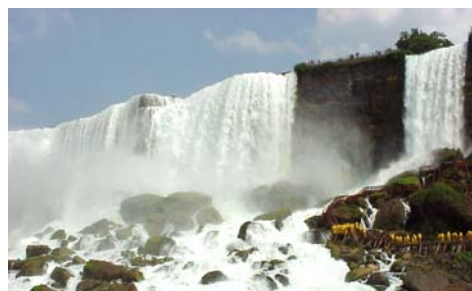
Downtown hotel located 10-15 minutes from the Training Center. Offers swimming, restaurant, lounge, exercise room, walking distance to The Falls and Canada, as well as many other tourist attractions.

[www.crowneplaza.com/niagarafalls](http://www.crowneplaza.com/niagarafalls)

---

Phone 1-800-367-8067 - Fax 716-774-8327 – Email: [training.cta@emerson.com](mailto:training.cta@emerson.com)

---



See one of the Seven  
Wonders  
of the World

Bring Your Camera!



[www.niagara-usa.com](http://www.niagara-usa.com)